



# TECHNICAL GUIDE





## WELCOME TO 114 GRAVEL RACE

Welcome to the VI edition of **114 GRAVEL RACE**, a race whose objective is to be a benchmark in the gravel modality in southern Europe.

**114 GRAVEL RACE** returns with more strength and enthusiasm to a new challenge such as the UCI Gravel World Series.

With a very gravel route, it will connect the neighbouring towns of Elvas and Badajoz crossing the oldest international border in Europe.

It will take place on March 28, 2026, also giving continuity to the **TOUR GRAVEL RACE**, the first Open Gravel in the Iberian Peninsula. Participants will be able to opt for the general classification of the **TOUR GRAVEL RACE** individually or in teams.

The route presents an ideal environment for the practice of gravel, through pastures, crop fields and paths along the Guadiana River that acts as a natural border between Portugal and Spain.

One of these roads, the GR114, is the one that gives its name to the event. This natural path runs parallel to the Guadiana River from its source in the Lagunas de Ruidera to its mouth in the Atlantic.

A gravel race where you will enjoy the speed and fun of the gravel paradise that is the south of the Iberian Peninsula.

The organization wishes you the greatest success.



## ELVAS

Located in the district of Portalegre, in the Alentejo region, it is the seat of the municipality with *7 parishes*.

Elvas is a true medieval treasure, a town that has managed to preserve its treasures to the point that UNESCO could not resist making it a World Heritage Site in 2012.

It is one of the best-preserved fortified medieval cities in the world and its walls and bastions have become one of the biggest attractions for lovers of medieval history.

Elvas is located on a hill 8 km from the Guadiana River that is the de facto border between Portugal and Spain.

## BADAJOS

Badajoz is located in the southwest of the Iberian Peninsula and to the west of the province that bears its name, on the border with Portugal.

Its urban center is one kilometer from the Portuguese border of Caya that receives its name from the river that, in that area, separates Spain from Portugal.

It is integrated into the region of Tierra de Badajoz.

The border character of the city of Badajoz since its foundation in 875, has given it a marked military character.

The Alcazaba of Badajoz is the largest in Europe, it can be visited and must be if you want to enjoy unforgettable sunsets. Walk through its enclosure, with 1,200 meters of wall and about eight hectares of surface.



## HOW TO GET TO ELVAS-BADAJOZ

### Access by air:

- Badajoz Airport (BJZ).
  - Humberto Delgado Airport (Lisbon).
  - Seville-San Pablo Airport.
- Adolfo Suárez Madrid-Barajas Airport.

### Access by rail:

- Elvas train station.
- Badajoz train station.

### Access by road:

A-5 / A-6 Madrid – Lisbon

N-430 Badajoz - Valencia N-432 Badajoz - Córdoba – Granada

N-435 Badajoz - Huelva

N-523 Cáceres - Badajoz.

N246 Alpalhão-Elvas



## PROGRAM

**THURSDAY - MARCH 26, 2026**

### ELVAS

- **10:00 PT - 13:00 PT - Race Office Opening - Delivery of Bibs (Age Groups Only)**
- **10:30 PT – 12:00 PT - Social Ride by Specialized**
  - § WC:
    - Military Museum of Elvas
  - § Showers:
    - 11:00 PT to 13:30 PT – Athletics Stadium
- **16:30 PT – 18:30 PT - Time Trial – at Fort of Our Lady of Grace**
  - § WC:
    - Fort of Graça (Meta)
  - § Showers:
    - 18:00 PT to 20:00 PT – Athletics Stadium
- **17:00 PT - 19:00 PT - Race Office Opening - Delivery of Bibs (Age Groups Only)**
- **17:00 PT - 19:00 PT - Classic Children's Games in Military Museum – Elvas**
- **18:30 PT – 19:00 PT – Trophy Ceremony – Time Trial – Fort of Grace by Specialized**



## PROGRAM

**FRIDAY - MARCH 27, 2026**

### **ELVAS**

- **10:00 PT – 13:00 PT - Race Office Opening - Bib Delivery (Age Groups Only)**
- **10:30 PT – 12:00 PT - Social Ride by Specialized**
  - § WC:
    - Military Museum of Elvas
  - § Showers:
    - 11:00 PT to 13:30 PT – Athletics Stadium
  - § Bicycle Wash:
    - Athletics Stadium
- **10:00 PT - 13:00 PT - Classic Children's Games in Military Museum – Elvas**

### **BADAJOS**

- **17:30 ES – 20:00 ES - Race Office Opening - Delivery of Bibs**
- **17:30 ES – 20:00 ES – Bicycle Transfer**
- **18:00 ES – 19.30 ES - Social Ride by Specialized and Radio Gravel**
- **18.30 ES – 20:00 ES – Jamonparty by Jamoneria Galisteo**
- **19:00 ES – 20:00 EX – Gymkana Kids by Specialized**



## PROGRAM

### SATURDAY - MARCH 28, 2026

#### BADAJOS

- 07:00 PT – 08:00 ES – Bicycles Transfer Badajoz – Elvas
- 07:30 PT – 08:30 ES – Departure Transfer Badajoz – Elvas

#### ELVAS

- 07:00 PT – 09:00 PT - Opening Access to the Elvas Military Museum
- 07:30 PT – 08:30 PT – Race Office Opening – Race Race Delivery
- 08:30 PT – 08:55 PT – Opening and Control of Starting Boxes
- 08.50 PT – 08:55 PT – Protocol Ribbon Cutting
- 09:00 PT – 09:30 PT – Start UGWS – 114 GRAVEL RACE
- 15:00 PT – 18:00 PT – Stadium Athletics Showers

#### BADAJOS

- 12:30 ES – 12:45 ES – Arrival of the first participant.
- 14:30 ES – 15:00 ES – Trophy Ceremony and Imposition of Jerseys
- 16:00 ES – 16:30 ES – First Transfer Elvas – Badajoz
- 17:15 ES – 17:30 ES – Second Transfer Elvas – Badajoz

### SUNDAY - MARCH 29, 2026

- 10:30 PT – 12:00 PT - Social Ride by Specialized



## AREAS OF INTEREST 114 GRAVEL RACE

### RACE OFFICE

#### ELVAS

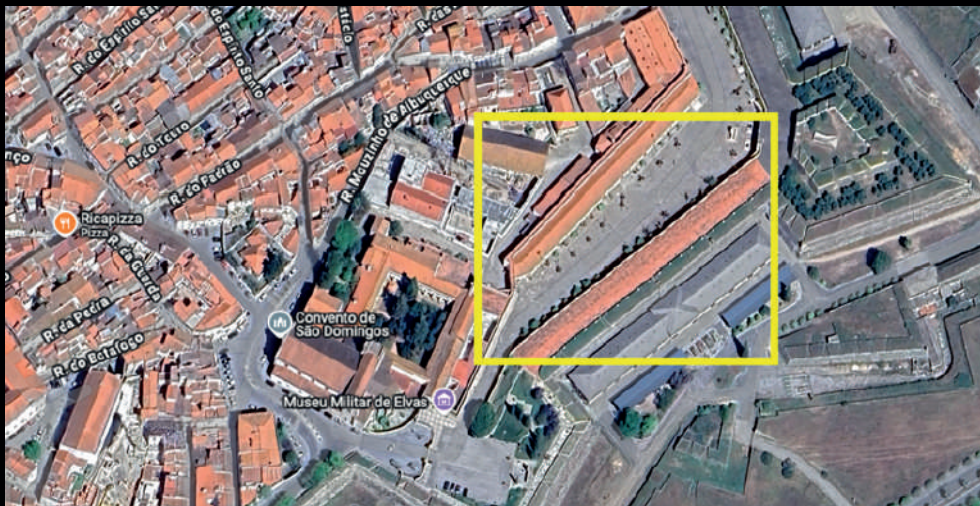
It will be located at the exit ([Military Museum of Elvas](#)).

#### BADAJOS

It will be located in the [Paseo del Fluvial Park](#). In the Race Office tent they will be able to register and ask any questions. It is mandatory for all participants to register with the Race Office

#### START

It will be held from the [Military Museum of Elvas](#)(Elvas, Portugal).

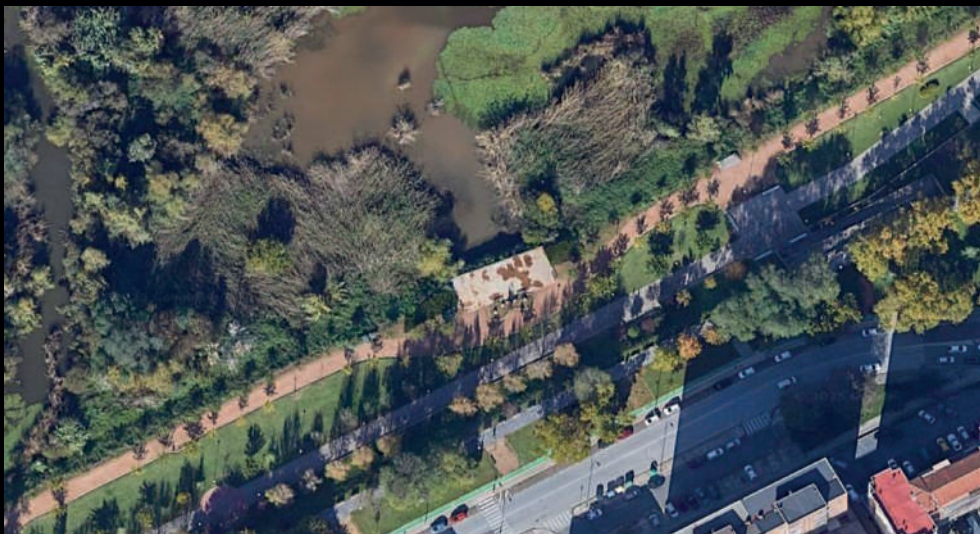




## AREAS OF INTEREST 114 GRAVEL RACE

### FINISH

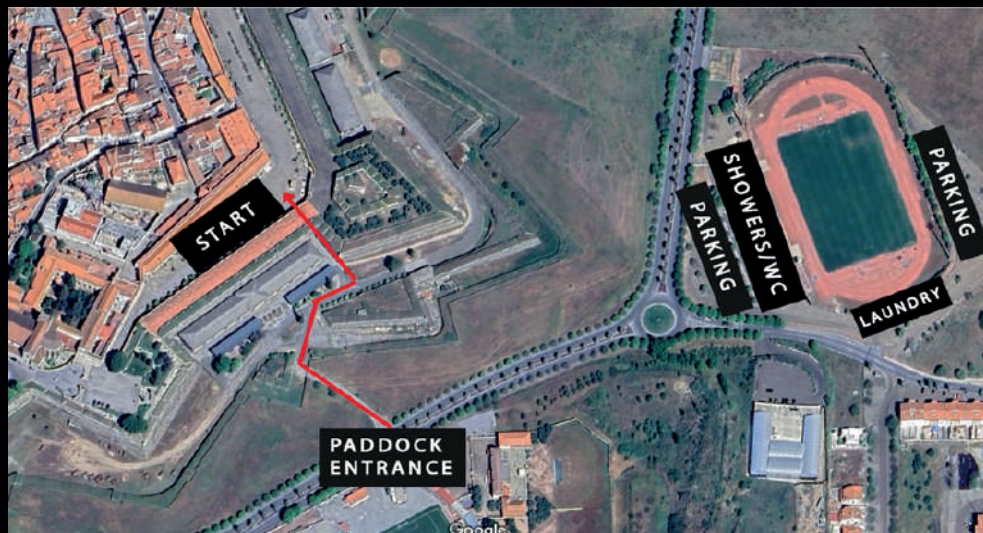
It will be located in the [Paseo Fluvial Park](#)





## AREAS OF INTEREST 114 GRAVEL RACE

### ELVAS



#### LOCKER ROOMS

[Municipal Athletics Stadium](#)

#### SHOWERS:

[Municipal Athletics Stadium](#)

#### PARKING

[Municipal Athletics Stadium](#)

#### BICYCLE WASH

[Municipal Athletics Stadium](#)



## AREAS OF INTEREST 114 GRAVEL RACE

### BADAJOS



### LOCKER ROOMS

[Sports facilities "LA GRANADILLA"](#)

### SHOWERS:

[Sports facilities "LA GRANADILLA"](#)

### PARKING FOR MOTORHOMES

### ELVAS

[Motorhome Parking](#)

### BADAJOS

[Motorhome area of Badajoz](#)



## AREAS OF INTEREST 114 GRAVEL RACE



### ESTACIONAMENTO

[Mercado de terça-feira](#)

### LAVAGEM DE BICICLETAS

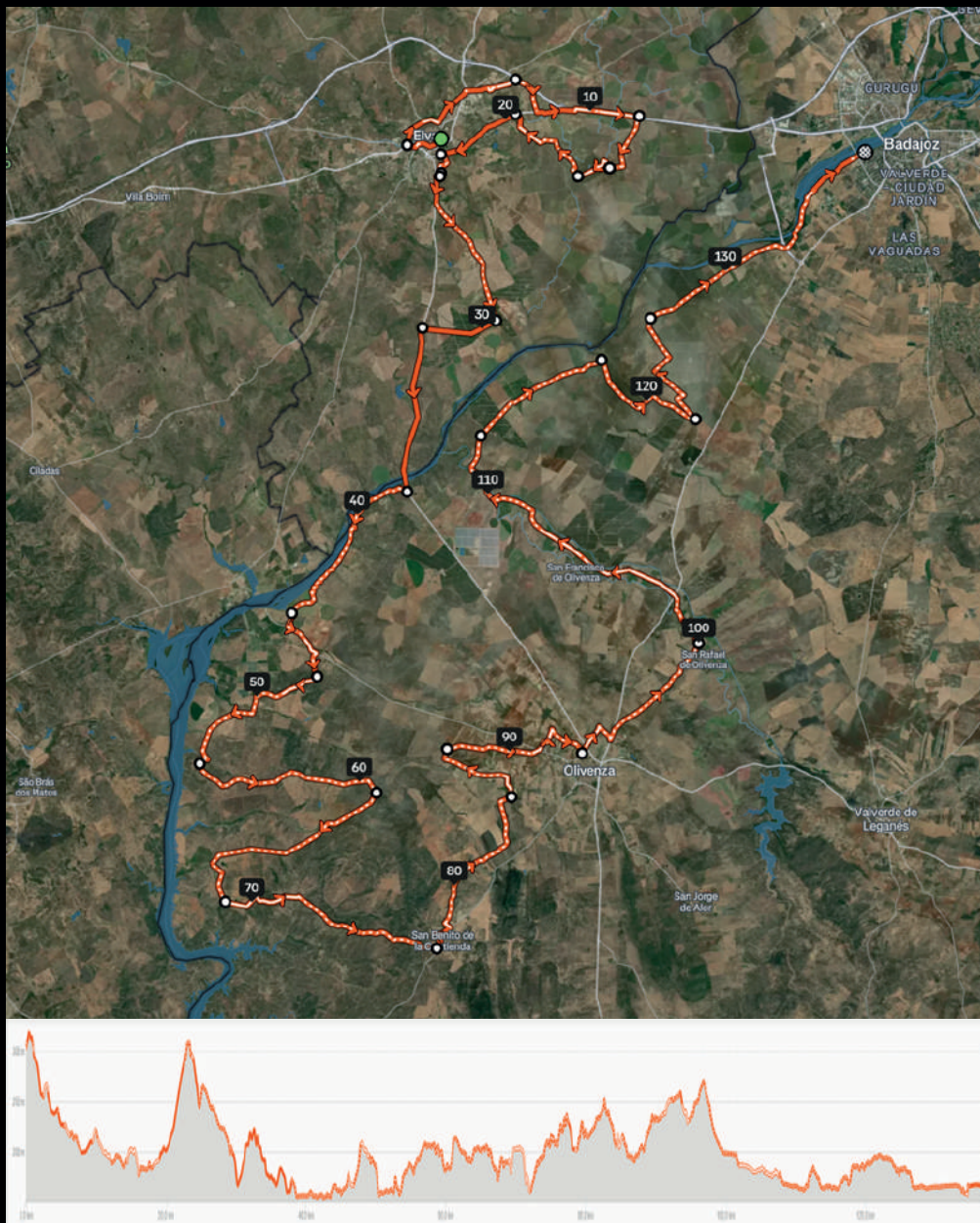
[Mercado de terça-feira](#)

### ZONA DE FESTA

[Parque River Walk](#)



# ROUTE





## TRACK 114 GRAVEL RACE

**DISTANCE: 137.12 Km**

**ELEVATION GAIN: +1,129 m.**

Tour departing from the Military Museum of Elvas and arrival at the Paseo del Gadiana Park Stadium.

It will pass through the towns of:

Elvas

Badajoz

Villareal

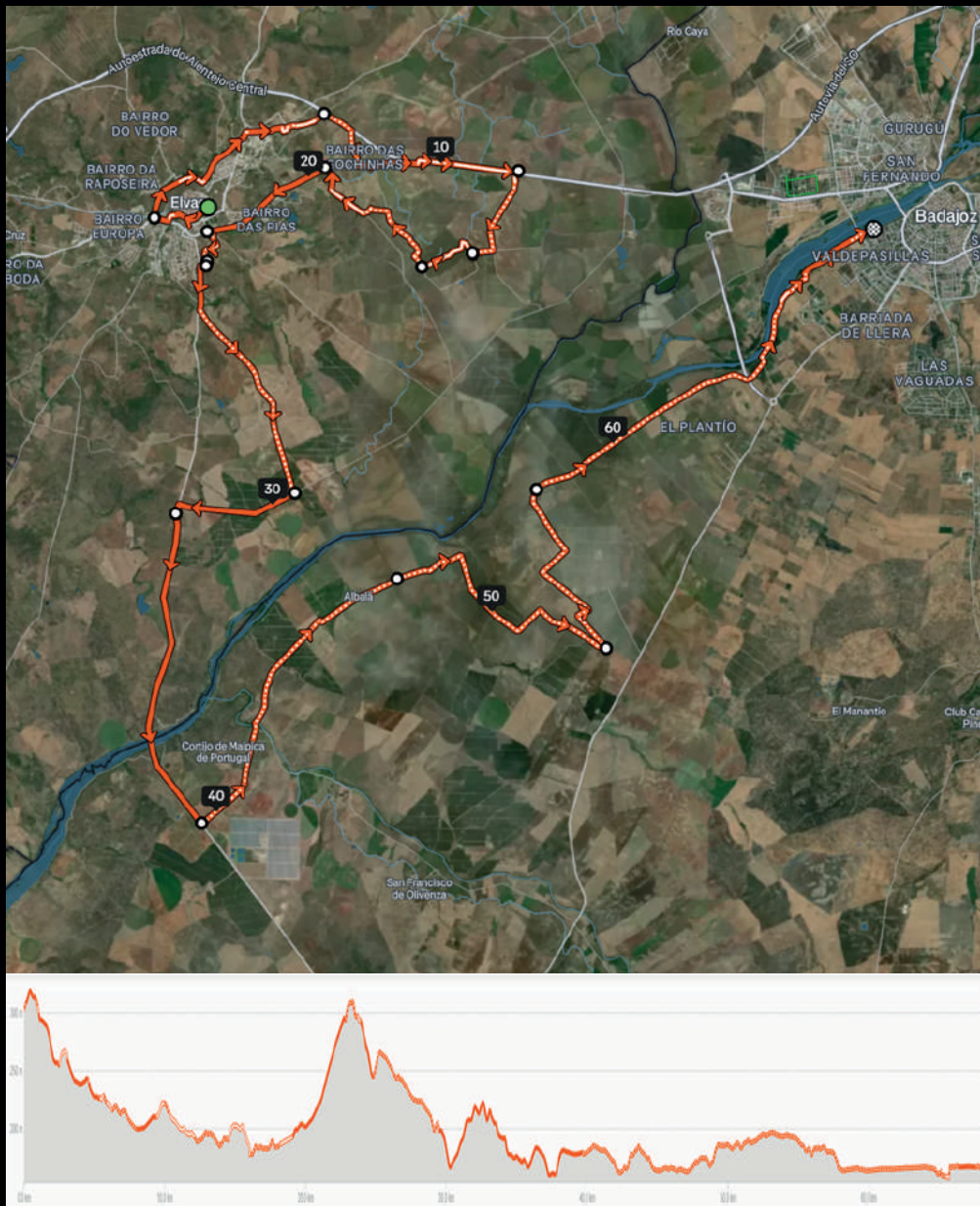
Olivenza

Badajoz

Due to the changes that some areas of passage may undergo, a detailed description of the route will be made, highlighting the most characteristic places as the date of the race approaches.



# ROUTE 114 GRAVEL RACE EXPRESS





## TRACK 114 GRAVEL RACE EXPRESS

**DISTANCE: 68.23 km**

**ELEVATION GAIN: +484 m.**

Tour departing from the Military Museum of Elvas and arriving at the Paseo del Gadiana Park Stadium in Badajoz

## REFRESHMENTS (PR)

- Output: Liquid

- AV 1: Km 46:

[LOCATION](#)

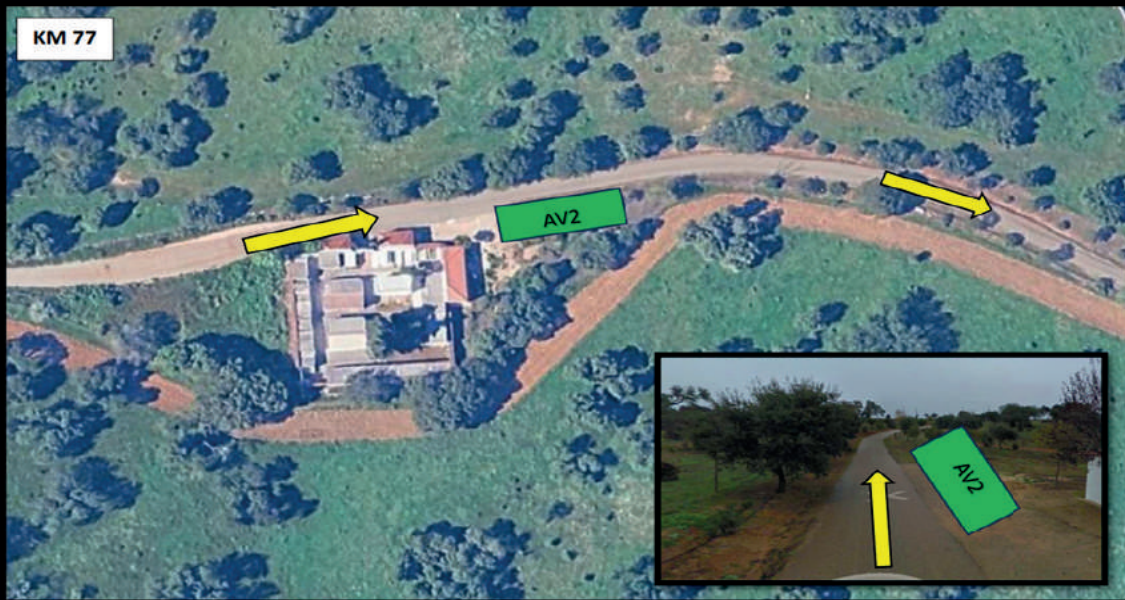




## REFRESHMENTS (PR)

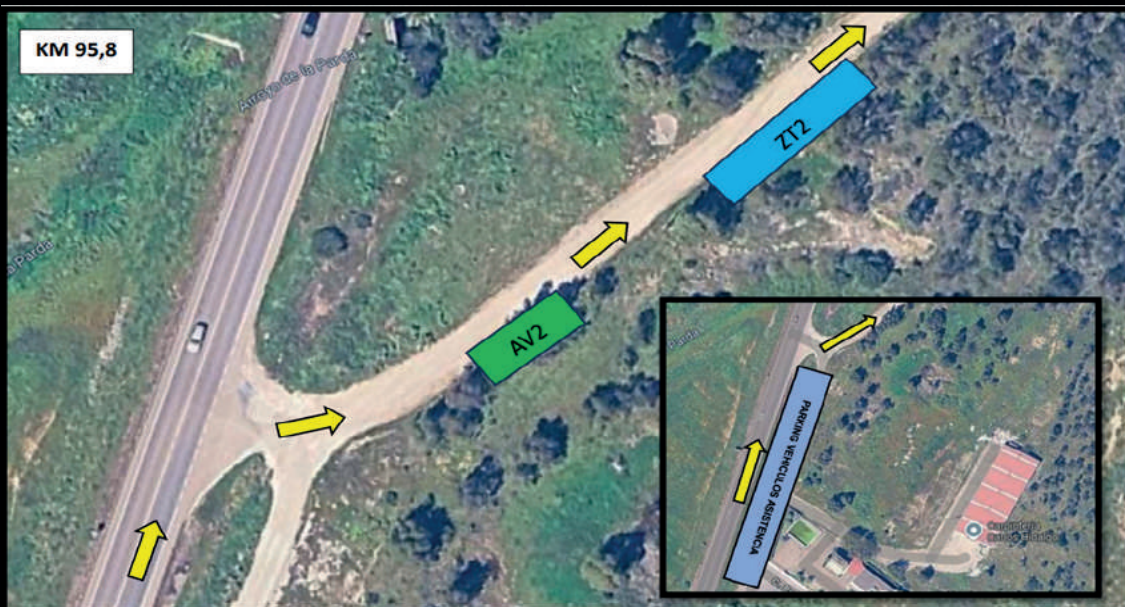
- AV 2: Km 77 :

[LOCATION](#)



- AV 3: Km 95.8:

[LOCATION](#)

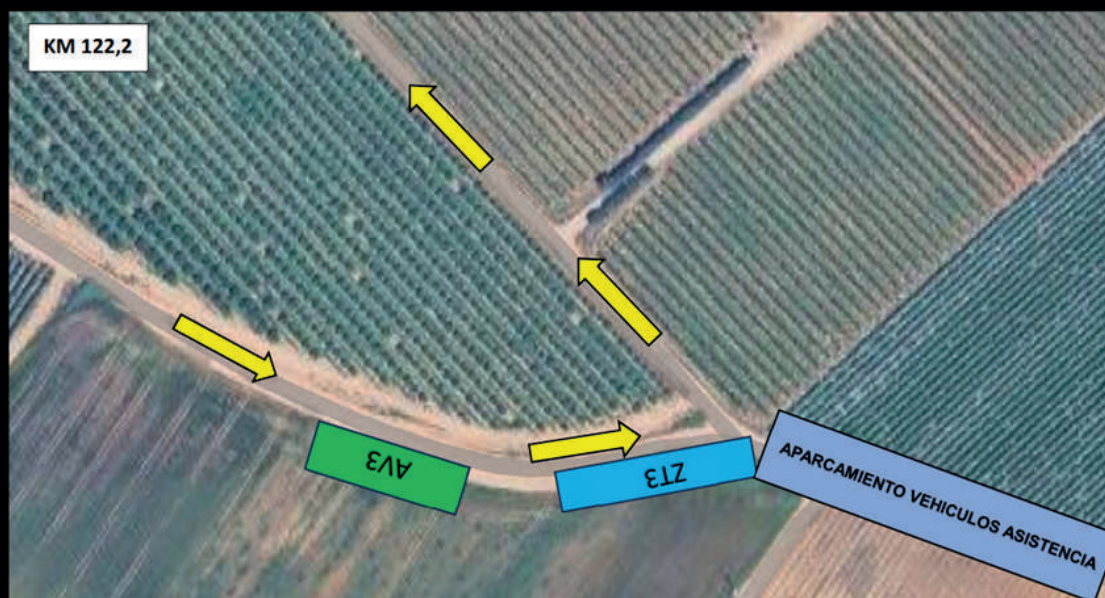




## REFRESHMENTS (PR)

- AV 4: Km 122:

[LOCATION](#)



### TECHNICAL AREAS:

It is mandatory that all authorized personnel in the Technical Zones remain on the right side of the road, you will find the areas marked by each team.

- Technical Zone 1: Kilometre 46 point
- Technical Zone 2: Kilometre 77 Point
- Technical Zone 3: Kilometre 122 Point

### HEALTH CARE

Medical Centre: Arrival Paddock –  
Medical Station 1 Tour: Km 46  
Medical Station 2 tour: Km 77  
Medical Station 3 Tour: Km 122



## TRANSFER

Transfer schedules for participants who have contracted the service

	PT Time	Starting Location	Local Chegada	Time ES
Chegada to Badajoz	7h	<a href="https://goo.gl/maps/t1YmR6PPgUrGuLww6">https://goo.gl/maps/t1YmR6PPgUrGuLww6</a>  38°52'26.0"N 6°59'31.6"W	Military Museum	8h
Departure from Badajoz	7:30 a.m.			8h30
Chegada to Badajoz	3pm		Athletics Stadium	4 pm
Departure from Badajoz	3:30 p.m.			4:30 p.m.
Chegada to Badajoz	4:15 p.m.		Athletics Stadium	5:15 p.m.
Departure from Badajoz	4:30 p.m.			5:30 p.m.

### Important:

Participants who have contracted the service should deliver the bicycles for transfer to Elvas on Friday, March 27, 2026 from 5:30 p.m. to 8:00 p.m.



## CONTACT

[www.114gravelrace.com](http://www.114gravelrace.com)

E-mail: [staff@extremenamente.com](mailto:staff@extremenamente.com)

Telephones: +34679886752/+34643678248

Other important contacts:

Fire Brigade Tel. – 085 / 080

Red Cross Tel. – 112

Civil Guard Tel. – 062

Local Police Tel. – 092

Health Emergency Service Tel. – 112



Dirección General de  
Turismo y Deportes



PANTHER&CO



TOUR GRAVEL RACE



extremeñamente



# TECHNICAL GUIDE

